



GATE VALVE

Gate valves are primarily designed to start or stop flow, and when a straight-line flow of fluid and minimum flow restriction are needed. In service, these valves generally are either fully open or fully closed.

The disc of a gate valve is completely removed when the valve is fully open, the disc is fully drawn up into the valve bonnet. This leaves an opening for flow through the valve at the same internal diameter as the pipesystem in which the valve is installed. A gate valve can be used for a wide range of liquids and provides a tight seal when closed.

GATE VALVE

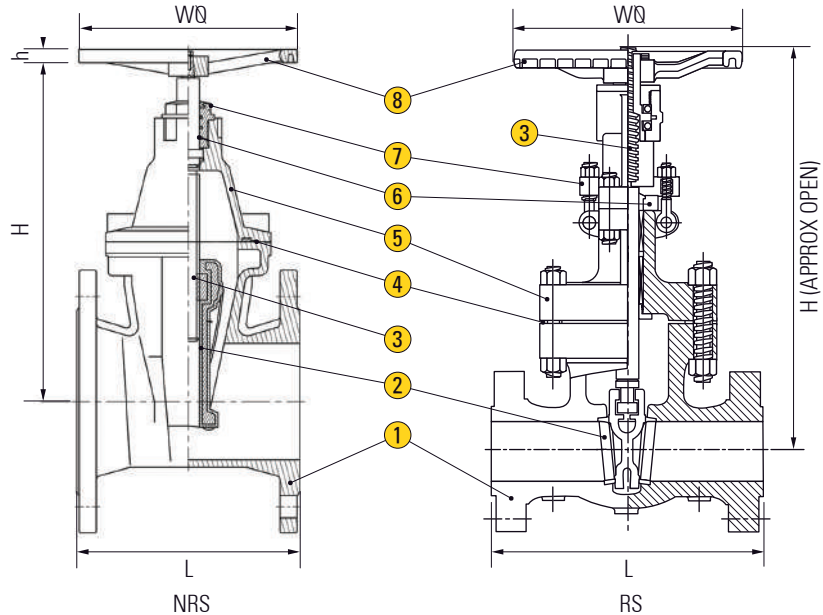
DIN STD/ANSI STD (NRS & RS)

CL 125 : BODY - CAST IRON

CAST IRON / CARBON STEEL / STAINLESS STEEL



FIG 111



APPLICATION

Suitable for oil, water, steam and others non-abrasive media
(Refer to corrosion resistance table for valve materials selection).

SPECIFICATION

Face To Face Dimension	DIN 3202 F4 (optional F5, F7)
End Connection	Flanged End to DIN PN16
Pressure Rating	16 Bar
Working Temperature	Up to 150°C

MATERIAL

Parts	FIG 111 - CI	FIG 111 - CS	FIG 111 - SS304 / SS316
1 Body	Cast Iron EN-GJL-250	Cast Steel GP240GH	Stainless Steel 1.4301 / 1.4408
2 Wedge	Stainless Steel X20Cr13	Stainless Steel X20Cr13	Stainless Steel F304 / F316
3 Stem	Stainless Steel X20Cr13	Stainless Steel X20Cr13	Stainless Steel F304 / F316
4 Bonnet Gasket	Graphite - CrNiSt	Graphite - CrNiSt	SS 304 / 316 + Graphite
5 Bonnet	Cast Iron EN-GJL-250	Cast Steel GP240GH	Stainless Steel 1.4301 / 1.4408
6 Packing	Graphite	Graphite	Graphite
7 Gland	Cast Iron EN-GJL-250	Forged Steel C 22.8	Stainless Steel F304 / F316
8 Handwheel	Cast Iron EN-GJL-250	Cast Steel GP240GH	Cast Steel GP240GH

PREASSURE-TEMPERATURE RATINGS ACC. DIN EN 1092-1/2

Material	Temperature										
	-10°C	20°C	100°C	120°C	150°C	200°C	250°C	300°C	350°C	400°C	450°C
PN16 - Cast Iron	16 Bar	16 Bar	16 Bar	16 Bar	14 Bar	13 Bar	11 Bar	10 Bar	-	-	-
PN40 - Cast Steel	40 Bar	40 Bar	40 Bar	40 Bar	37 Bar	35 Bar	32 Bar	28 Bar	24 Bar	21 Bar	18 Bar

DIMENSIONS (mm)

Size	inch	2	2 ½	3	4	5	6	8	10	12	14	16
	mm	50	65	80	100	125	150	200	250	300	350	400
DIN 3352 (PN16)	L	150	170	180	190	200	210	230	250	270	290	310
	H	216	238	261	310	365	407	504	602	680	762	836
	ØW	160	160	180	200	250	250	280	300	355	450	450
	Weight (Kg)	11	14	17	22	30	35	60	85	120	180	235
ANSI B16.5 (ANSI 150#)	L	178	190	203	229	254	267	292	330	356	381	406
	H	320	345	387	490	576	680	808	1010	1080	1258	1385
	ØW	200	200	200	254	300	300	345	400	450	505	556
	Weight (Kg)	20	26	32	50	70	89	141	218	315	457	570

*Specification given are subject to changed without further notice.

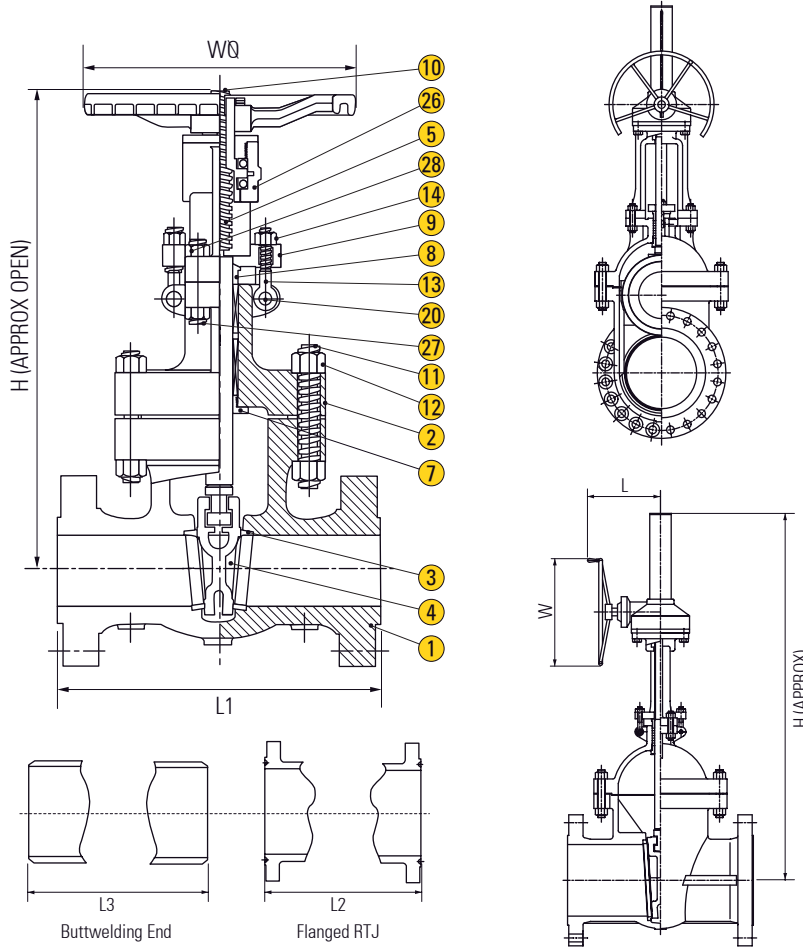


FIG GA-*1-*2-*3

Note : *1 Class | *2 Material | *3 Connection

SPECIFICATION

Designed and Manufactured API 6D
 Face To Face Dimension ASME 16.10
 Pressure Rating Class 150, 300, 600, 900, 1500 and 2500
 Flange End Dimension ASME B16.5

BW End Dimension ASME B16.25
 Test and Inspection API 598
 Pressure - Temperature Rating ASME B16.34

MATERIAL

Parts	ASTM Specification						
	Standard	High Temperature Service				Low Temperature Service	Corrosion Service
1 Body	A216-WCB	A217-WC1	A217-WC6	A217-WC9	A217-C5	A352-LCB	A351-CF8M
2 Bonnet	A216-WCB	A217-WC1	A217-WC6	A217-WC9	A217-C5	A352-LCB	A351-CF8M
3 Disc	A217-CA15	A217-WC1	A217-WC6	A217-WC9	A217-C5	A352-LCB	A351-CF8M
4 Body Seat Ring	A105+HARD FACE	A105+HARD FACE	A105+HARD FACE	A105+HARD FACE	A105+HARD FACE	A182-F304	A182-F316
5 Stem	A276-410	A276-410	A276-410	A276-410	A276-410	A276-304	A276-316
7 Bonnet Bush	A276-410	A276-410	A276-410	A276-410	A276-410	A276-304	A276-316
8 Packing Gland	A276-410	A276-410	A276-410	A276-410	A276-410	A276-F304	A276-316
9 Gland Flange	A105	A105	A105	A105	A105	A105	A351-CF8/A240-304
10 Stem Nut	A439-D2	A439-D2	A439-D2	A439-D2	A439-D2	A439-D2	A351-CF8/A240-304
11 Bonnet Bolt	A193-B7	A193-B7	A193-B7	A193-B16	A193-B16	A320-L7	A193-B8
12 Bonnet Nut	A194-2H	A194-2H	A194-2H	A194-4	A194-4	A194-4	A194-8
13 Gland Bolt	A307.B	A307.B	A307.B	A307.B	A307.B	A307.B	A193-B8
14 Gland Nut	A307.B	A307.B	A307.B	A307.B	A307.B	A307.B	A194-8
20 Hinge Pin	A276-410	A276-410	A276-410	A276-410	A276-410	A276-304	A276-304
26 Yoke	A216-WCB	A217-WC1	A217-WC6	A217-WC9	A217-C5	A352-LCB	A351-CF8M
27 Yoke Bolt	A193-B7	A193-B7	A193-B7	A193-B16	A193-B16	A320-L7	A193-B8
28 Yoke Nut	A194-2H	A194-2H	A194-2H	A194-4	A194-4	A194-4	A194-8

*Note : In case of 12" and larger size, We' ll use trim material overlayed one on the same or equivalent material of the body.

*Specification given are subject to changed without further notice.

CLASS 150 *(N/A for L2)

Valve Size	inch	2	2½	3	4	5	6	8	10	12	14	16	18	20	24	28	30	36	40
	mm	50	65	80	100	125	150	200	250	300	350	400	450	500	600	700	750	900	1000
L1	inch	7.0	7.5	8.0	9.0	10.0	10.5	11.5	13.0	14.0	15.0	16.0	17.0	18.0	20.0	24.0	24.0	28.0	30.0
	mm	178	191	203	229	254	267	292	330	356	381	406	432	457	508	610	610	711	762
L3	inch	-	9.5	11.12	12.0	15.0	15.88	16.5	18.0	19.75	22.5	24.0	26.0	28.0	32.0	36.0	36.0	40.4	42.0
	mm	216	241	283	305	381	403	419	457	502	572	610	660	711	813	914	914	1016	1067
H	inch	14.0	16.3	18.4	22.2	26.5	30.0	41.9	50.6	58.3	60.0	68.7	79.1	91.7	109.6	127.4	134.5	161.8	183.9
	mm	356	415	468	565	674	762	1065	1285	1480	1523	1745	2010	2330	2784	3236	3417	4109	4670
W	inch	7.7	7.7	8.5	9.4	11.0	11.8	14.0	15.7	17.7	13.8	13.8	13.8	17.7	17.7	22.0	22.0	27.9	31.5
	mm	195	195	215	240	280	300	355	400	450	350	350	350	450	450	560	560	710	800
L	inch	-	-	-	-	-	-	-	-	-	13.1	13.1	13.1	14.3	14.3	16.3	16.3	18.4	20.7
	mm	-	-	-	-	-	-	-	-	-	332	332	332	362	362	414	414	468	526
Weight	LB	44.1	55.1	66.2	97.0	132.3	154.4	233.7	368.2	526.9	760.7	1080.5	1274.5	1611.9	2280.0	3572.1	4057.2	7497.0	9481.5
	Kg	20	25	30	44	60	70	106	167	239	345	490	578	731	1043	1620	1840	3400	4300

CLASS 300

Valve Size	inch	2	2½	3	4	5	6	8	10	12	14	16	18	20	24	28	30	36	40	42
	mm	50	65	80	100	125	150	200	250	300	350	400	450	500	600	700	750	900	1000	1050
L1 & L3	inch	8.5	9.5	11.12	12.0	15.0	15.88	16.5	18.0	19.75	30.0	33.0	36.0	39.0	45.0	53.0	55.0	68.0	76.0	78.0
	mm	216	241	283	305	381	403	419	457	502	762	838	914	991	1143	1346	1397	1727	1930	1981
L2	inch	9.12	10.12	11.47	12.62	15.63	16.5	17.12	18.62	20.37	30.62	33.62	36.62	39.75	45.88	54.0	56.0	69.12	-	-
	mm	216	257	298	321	397	419	435	473	518	778	854	930	1010	1165	1372	1422	1756	-	-
H	inch	16.3	17.5	20.5	23.2	28.3	33.3	40.4	48.2	61.4	60.0	68.7	79.1	91.7	109.6	130.0	148.5	169.8	188.6	198.1
	mm	415	445	520	590	720	845	1025	1225	1560	1523	1745	2010	2330	2784	3302	3772	4312	4791	5032
W	inch	7.7	7.7	8.5	9.4	11.0	11.0	14.0	15.7	17.7	17.7	17.7	22.0	22.0	27.9	35.4	35.4	30.0	30.0	30.0
	mm	195	195	215	240	280	355	400	450	500	450	450	560	560	710	900	900	760	760	760
L	inch	-	-	-	-	-	-	-	-	14.3	14.3	16.3	16.3	18.4	21.8	21.8	21.8	21.8	20.2	20.2
	mm	-	-	-	-	-	-	-	-	362	362	414	414	468	554	554	554	554	512	512
Weight	LB	52.9	75.0	90.4	143.3	209.5	257.9	401.3	368.2	1060.6	1528.1	2094.8	2535.8	3307.5	4961.3	6637.1	8180.6	11002.9	13528.8	14994.0
	Kg	24	34	41	65	95	117	182	355	481	693	950	1150	1500	2250	3010	3710	4990	6160	6800

CLASS 600

Valve Size	inch	2	2½	3	4	5	6	8	10	12	14	16	18	20	24	
	mm	50	65	80	100	125	150	200	250	300	350	400	450	500	600	700
L1 & L3	inch	11.5	13.0	14.0	17.0	20.0	22.0	26.0	31.0	33.0	33.0	36.0	39.0	43.0	47.0	55.0
	mm	292	330	356	432	580	556	660	787	838	838	889	991	1092	1194	1397
L2	inch	11.62	13.12	14.12	17.12	19.57	22.12	26.12	31.12	33.12	33.12	35.12	39.12	43.12	47.25	55.38
	mm	295	333	359	435	497	562	664	791	841	841	892	991	1095	1200	1406
H	inch	18.7	21.6	23.5	26.8	31.5	36.6	45.7	53.1	61.8	72.1	82.9	98.0	104.8	116.9	
	mm	475	550	598	680	800	930	1160	1350	1570	1832	2106	2489	2662	2970	
W	inch	7.7	7.7	9.4	11.8	14.0	17.7	17.7	19.7	22.0	22.0	27.9	27.9	31.5	35.4	
	mm	195	195	240	300	355	450	450	500	560	560	710	710	800	900	
L	inch	-	-	-	-	-	-	-	-	16.3	16.3	18.4	18.4	20.7	26.4	
	mm	-	-	-	-	-	-	-	-	414	414	468	468	526	670	
Weight	LB	79.4	127.9	154.4	269.0	441	551.2	893.0	1433.2	1896.3	2734.2	3109.1	4890.7	6198.3	8656.8	
	Kg	36	58	70	122	200	250	405	650	860	1240	1410	2218	2811	3926	

CLASS 900

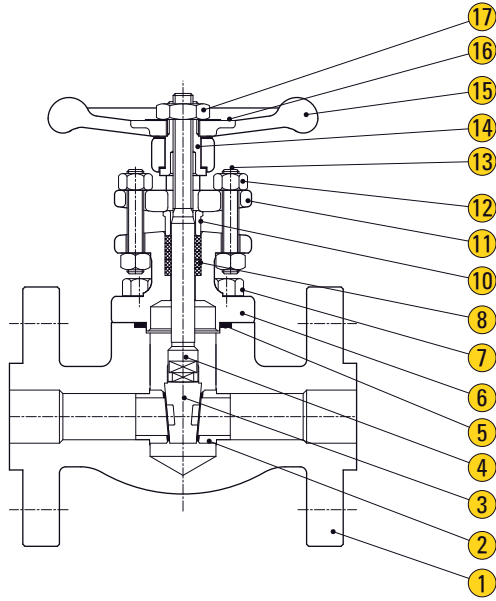
Valve Size	inch	2	2½	3	4	5	6	8	10	12	14	16	18	20	24
	mm	50	65	80	100	125	150	200	250	300	350	400	450	500	600
L1 & L3	inch	14.5	16.5	15.0	18.0	22.0	24.0	29.0	33.0	38.0	40.5	44.5	48.0	52.0	61.0
	mm	368	419	381	457	559	610	737	838	965	1029	1130	1219	1321	1549
L2	inch	14.62	16.62	15.12	18.12	22.13	24.12	29.12	33.12	38.12	40.88	44.88	48.5	52.5	61.75
	mm	371	422	384	460	562	613	740	841	968	1038	1140	1232	1334	1568
H	inch	21.2	26.4	26.4	30.8	37.1	42.4	55.5	67.7	77.4	74.9	80.7	88.8	110.2	124.0
	mm	539	670	670	782	943	1076	1411	1720	1965	1902	2051	2256	2800	3150
W	inch	11.8	11.8	14.0	15.7	19.7	22.0	17.7	22.0	22.0	24.0	24.0	30.0	30.0	24.0
	mm	300	300	355	400	500	560	450	560	560	610	610	760	760	610
L	inch	-	-	-	-	-	-	-	14.3	16.3	16.3	20.2	20.2	21.8	21.8
	mm	-	-	-	-	-	-	-	362	414	414	512	512	554	554
Weight	LB	181	341.8	364	384	661.5	999	1720	2752	3400	4895.1	6615	8533.4	10716.3	16096.5
	Kg	82	155	165	174	300	453	780	1248	1542	2220	3000	3870	4860	7300

CLASS 1500

Valve Size	inch	2	2½	3	4	5	6	8	10	12	14	16	
	mm	50	65	80	100	125	150	200	250	300	350	400	450
L1 & L3	inch	14.5	16.5	18.5	21.5	26.5	27.75	32.75	39.0	40.5	44.5	49.5	54.5
	mm	368	419	470	546	673	705	832	991	1130	1257	1384	
L2	inch	14.62	16.62	18.62	21.62	26.61	28.0	33.13	39.38	45.12	50.25	55.38	
	mm	371	422	473	549	676	711	842	1000	1146	1276	1407	
H	inch	21.2	26.4	29.1	30.8	43.62	47.0	60.8	66.5	82.3	85.1	97.9	
	mm	539	670	738	783	1108	1196	1546	1688	2090	2167	2486	
W	inch	11.8	11.8	15.7	19.7	24.8	13.8	22.0	27.9	27.9	30.0	30.0	
	mm	300	300	400	500	630	350	560	710	710	760	760	
L	inch	-	-	-	-	-	-	13.1	16.3	16.3	18.4	18.4	
	mm	-	-	-	-	-	-	332	414	414	468	468	
Weight	LB	181	341.8	401	573	926.1	1360	3175	4412	8417	9073.6	15324.8	
	Kg	82	155	182	260	420	617	1440	2001	3816	4115	6950	

CLASS 2500

Valve Size	inch	2	2½	3	4	6	8	10	12	
	mm	50	65	80	100	100	150	200	250	300
L1 & L3	inch	17.75	20.0	22.75	26.5	26.5	36.0	40.25	50.0	56.0
	mm	451	508	578	673	673	914	1022	1270	1422
L2	inch	17.87	20.25	23.0	26.88	26.88	36			



APPLICATION

Suitable for water, steam, oil, gases and non-abrasive media
 (Refer to corrosion resistance table for valve materials selection).

SPECIFICATION

Face To Face Dimension	ASME B16.10
Pressure Rating	Class 150, 300, 600, 1500 and 2500
End To End Dimension	ASME B16.10
Flange End Dimension	ASME B16.5
BW End Dimension	ASME B16.25

FIG GT-^{*}1-^{*}2-^{*}3

Note : ^{*}1 Class | ^{*}2 Material | ^{*}3 Connection

CLASS 150 - 300 - 600

Unit : mm (inch)

Port	Valve Size	Handwheel Diameter	Center to Top (Open)	Dia. of Port Openings	End to End			Approx. Wt, Kg (Lb)		
					Class 150	Class 300	Class 600	Class 150	Class 300	Class 600
Reduced	1/2	86 (3.39)	145 (5.71)	9.8 (0.39)	108 (4.25)	140 (5.50)	165 (6.50)	2.5 (5.5)	3.0 (6.6)	3.3 (7.3)
	3/4	86 (3.39)	151 (5.95)	13.0 (0.51)	117 (4.62)	152 (6.00)	190 (7.50)	3.1 (6.8)	4.0 (8.8)	4.6 (10.1)
	1	99 (3.90)	190 (7.48)	18.0 (0.71)	127 (5.0)	165 (6.50)	216 (8.50)	4.7 (10.4)	6.0 (13.2)	6.6 (14.6)
	1-1/2	124 (4.88)	241 (9.49)	31.0 (1.22)	165 (6.5)	190 (7.50)	241 (9.50)	8.7 (19.2)	11.0 (24.3)	12.2 (26.9)
	2	138 (5.43)	271 (10.67)	37.0 (1.46)	178 (7.0)	216 (8.50)	292 (11.50)	12.2 (26.9)	14.0 (30.9)	15.8 (34.8)

CLASS 1500

Unit : mm (inch)

Port	Valve Size	Handwheel Diameter	Center to Top (Open)	Dia. of Port Openings	End to End	Approx. Wt, Kg (Lb)
Reduced	1/2	86 (3.39)	153 (6.02)	9.8 (0.39)	216 (8.50)	6.5 (14.3)
	3/4	99 (3.90)	190 (7.58)	13.0 (0.51)	229 (9.00)	9.0 (19.9)
	1	124 (4.88)	230 (9.06)	18.0 (0.71)	254 (10.00)	13.8 (30.4)
	1-1/2	138 (5.43)	272 (10.71)	31.0 (1.22)	305 (12.00)	22.2 (49.0)
	2	157 (6.18)	325 (12.80)	37.0 (1.46)	368 (14.25)	33.2 (73.2)

CLASS 2500

Unit : mm (inch)

Port	Valve Size	Handwheel Diameter	Center to Top (Open)	Dia. of Port Openings	End to End	Approx. Wt, Kg (Lb)
Full	1/2	124 (4.88)	311 (12.24)	12.7 (0.50)	264 (10.38)	18 (40)
	3/4	124 (4.88)	311 (12.24)	12.7 (0.50)	273 (10.75)	19 (42)
	1	200 (7.88)	388 (15.27)	18.0 (0.71)	308 (12.12)	35 (77)
	1-1/2	200 (7.88)	430 (16.93)	25.4 (1.00)	384 (15.12)	54 (119)
	2	250 (9.84)	480 (18.90)	31.8 (1.25)	351 (17.75)	82 (181)

*Specification given are subject to changed without further notice.

GATE VALVE

FORGED CARBON STEEL / STAINLESS STEEL

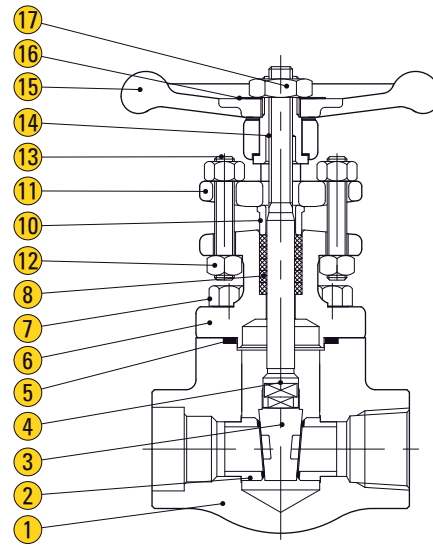
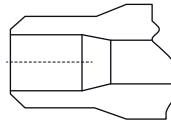
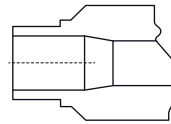


FIG GT-*1-*2-*3

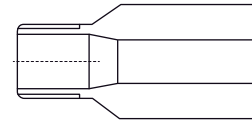
Note : *1 Class | *2 Material | *3 Connection



BW



SW



NPT

APPLICATION

Suitable for water, steam, oil, gases and non-abrasive media
(Refer to corrosion resistance table for valve materials selection).

SPECIFICATION

Face To Face Dimension	ASME B16.10
Pressure Rating	Class 600, 800, 1500 and 2500
End To End Dimension	ASME B16.10
Flange End Dimension	ASME B16.5
BW End Dimension	ASME B16.25

Unit : mm (inch)

CLASS 600 / 800

Port	Valve Size	Handwheel Diameter	End to End	Center to Top (Open)	Dia. of Port Openings	Approx. Wt Kg (Lb)
Reduced	1/2	86 (3.39)	76 (2.99)	145 (5.71)	9.8 (0.39)	1.5 (3.3)
	3/4	86 (3.39)	86 (3.39)	151 (5.95)	13.0 (0.51)	2.0 (4.4)
	1	99 (3.90)	102 (4.02)	190 (7.48)	18.0 (0.71)	2.8 (6.2)
	1-1/4	124 (4.88)	117 (4.61)	241 (9.49)	31.0 (1.22)	5.2 (11.5)
	1-1/2	124 (4.88)	117 (4.61)	241 (9.49)	31.0 (1.22)	5.2 (11.5)
	2	138 (5.43)	133 (5.24)	271 (10.67)	37.0 (1.46)	8.2 (18.8)

Full	1/2	86 (3.39)	86 (3.39)	151 (5.95)	13.0 (0.51)	2.0 (4.4)
	3/4	99 (3.90)	102 (4.02)	190 (7.48)	18.0 (0.71)	2.8 (6.2)
	1	124 (4.88)	117 (4.61)	241 (9.49)	23.0 (0.91)	5.2 (11.5)
	1-1/4	138 (5.43)	133 (5.24)	271 (10.67)	37.0 (1.46)	8.2 (18.8)
	1-1/2	138 (5.43)	133 (5.24)	271 (10.67)	37.0 (1.46)	8.2 (18.8)
	2	157 (6.18)	218 (8.58)	318 (12.52)	50.8 (2.00)	12.7 (28.0)

CLASS 1500

Unit : mm (inch)

Port	Valve Size	Handwheel Diameter	End to End	Center to Top (Open)	Dia. of Port Openings	Approx. Wt Kg (Lb)
Reduced	1/2	86 (3.39)	86 (3.39)	151 (5.95)	9.8 (0.39)	2.0 (4.4)
	3/4	99 (3.90)	102 (4.02)	190 (7.48)	13.0 (0.51)	3.4 (7.5)
	1	124 (4.88)	117 (4.61)	241 (9.49)	18.0 (0.71)	5.8 (12.8)
	1-1/4	138 (5.43)	133 (5.24)	271 (10.67)	31.0 (1.22)	8.5 (18.7)
	1-1/2	138 (5.43)	133 (5.24)	271 (10.67)	31.0 (1.22)	8.5 (18.7)
	2	157 (6.18)	210 (8.27)	325 (12.80)	37.0 (1.46)	11.7 (25.8)

*Specification given are subject to changed without further notice.

CLASS 2500

Unit : mm (inch)

Port	Valve Size	Handwheel Diameter	End to End	Center to Top (Open)	Dia. of Port Openings	Approx. Wt Kg (Lb)
Full	1/2	140 (5.51)	110 (4.33)	227 (8.94)	12.0 (0.47)	5.0 (11.0)
	3/4	200 (7.87)	127 (5.00)	270 (10.63)	16.0 (0.63)	8.0 (18.0)
	1	230 (9.06)	155 (6.10)	324 (12.76)	21.0 (0.83)	13.0 (30.0)
	1-1/4	250 (9.84)	210 (8.27)	390 (15.35)	32.0 (1.26)	23.0 (52.0)
	1-1/2	250 (9.84)	210 (8.27)	390 (15.35)	32.0 (1.26)	23.0 (52.0)
	2	315 (12.4)	229 (9.02)	487 (19.17)	38.0 (1.50)	38.0 (84.0)

MATERIAL

Parts	ASTM Designation												
	A105N	A350		A182					A182				
		LF2	LF3	F304/L	F316/L	F321	F347	F51	F5	F9	F11	F22	F91
1 Body	A105N	LF2	LF3	F304/L	F316/L	F321	F347	F51	F5	F9	F11	F22	F91
2 Seat Ring	A276-410+STL		A276-316+STL			A276-321+STL	A276-347+STL	UNS S31803+STL	A276-410+STL				
	A105+STL*	LF2+STL*							F5+STL*	F9+STL*	F11+STL*	F22+STL*	F91+STL*
3 Wedge	A217-CA15		A351-CF8M+STL			A276-321+STL	A276-347+STL	UNS S31803+STL	A217-CA15				
	A276-410*		A276-316+STL*						A276-410+STL*				
4 Stem	A276-410		A276-304	A276-316	A276-321	A276-347	UNS S31803	A276-410					
			A276-316*										
5 Gasket	304 Spiral Wound Graphite				316 SWG	321 SWG	347 SWG	Duplex SWG	304 Spiral Wound Graphite				
6 Bonnet	A105N	LF2	LF3	F304/L	F316/L	F321	F347	F51	F5	F9	F11	F22	F91
7 Bonnet Bolt	A193-B7	A320-L7		A193-B8				A193-B16					
8 Gland Packing	Graphoil												
10 Gland	316 Stainless Steel												
11 Gland Flange	A105		A182-F304					A105					
			A105*										
12 Gland Nut	A194-2H		A194-8					A194-2H					
			A194-2H*										
13 Gland Bolt	A193-B6		A193-B8					A193-B6					
	A193-B7*		A193-B7*					A193-B7*					
14 Yoke Sleeve	A582-416												
	High Tension Brass*												
15 Handwheel	A47												
16 Name Plate	Aluminium			304 Stainless Steel					Aluminium				
17 Handwheel Nut	A563-A												

STL: Stellite 6 faced

SWG : Spiral Wound Graphite

A182-F304/L : Dual Certificate Material for A182-F304 & A182-F304L

A182-F316/L : Dual Certificate Material for A182-F316 & A182-F316L

DUPLEX : Duplex Stainless Steel

* ASME CLASS 1500 and Above

* Other materials also available on request

*Specification given are subject to changed without further notice.